

BEAR CREEK ATHLETICS CENTRE

# PUBLIC OPEN HOUSE /2

The final phase of public consultation is now open.

We're investing in the future by upgrading sporting amenities at Bear Creek Park to meet international standards and support the needs of the community. The designs will include an improved track, a synthetic turf field and a partially covered grandstand seating for 2,200 spectators. We're looking for your input on the final designs for the new Bear Creek Athletics Centre.

Be sure to view the display boards and share your feedback with staff. Our project team members are available to provide further information and to answer any questions that you may have about the park. Your input is greatly appreciated and will be used to refine the layout and details in the construction drawing phase.

Please fill out the survey at the open house using one of the iPads provided or on your phone at your own convenience using the following scan code (*feedback is due by August 29, 2021*):



Find your survey here:  
[surrey.ca/parks](https://surrey.ca/parks)



[SURREY.CA/NEWPARKS](https://surrey.ca/newparks) / [#SURREYPARKS](https://twitter.com/SURREYPARKS)



*We are on the traditional territory of the Coast Salish Peoples.*

604.501.5050 / [surrey.ca/athleticscentre](https://surrey.ca/athleticscentre)

Surrey Parks



# BEAR CREEK ATHLETICS CENTRE VISION & GOALS



**Bear Creek Athletics Centre will be a world-class athletic destination that will contribute to the cultural character of Bear Creek Park.**

This athletics centre will position Surrey as a regional destination for high-level soccer and football games in addition to a full range of track and field sports. The project also provides the local community with an accessible state-of-the-art sport facility for exercise plus a new venue to host potential cultural events.

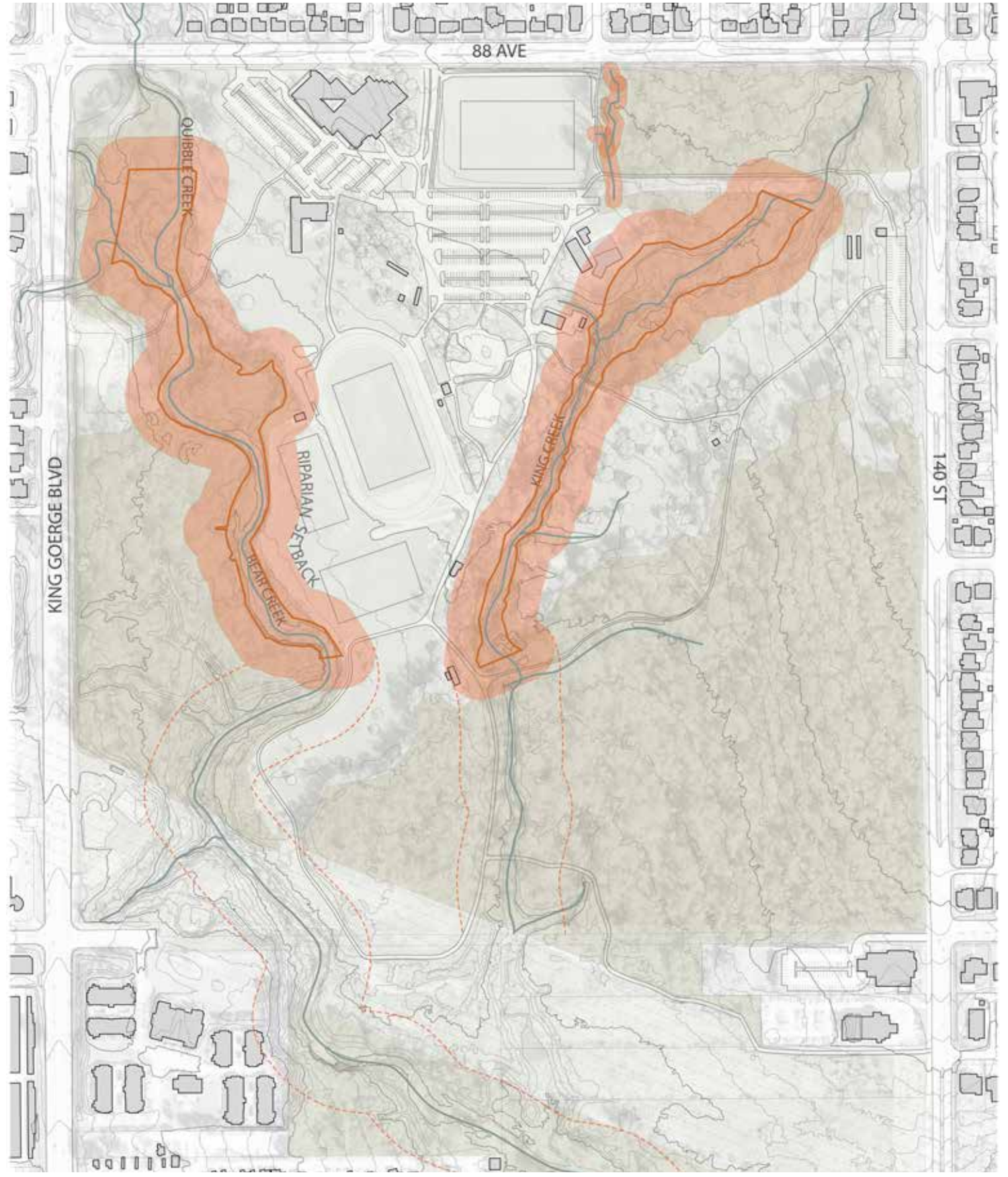
The Bear Creek Athletics Centre will deliver:

- A grandstand with permanent seating for 2,200 people (2/3 covered) with possible expansion of another 1,000 temporary seats.
- An upgraded track aligned with international sport standards.
- A new synthetic turf field.
- Team changerooms and public washrooms located underneath the grandstand.
- Upgraded plaza areas for concession and ticketing spaces.

604.501.5050 / [surrey.ca/athleticscentre](https://surrey.ca/athleticscentre)

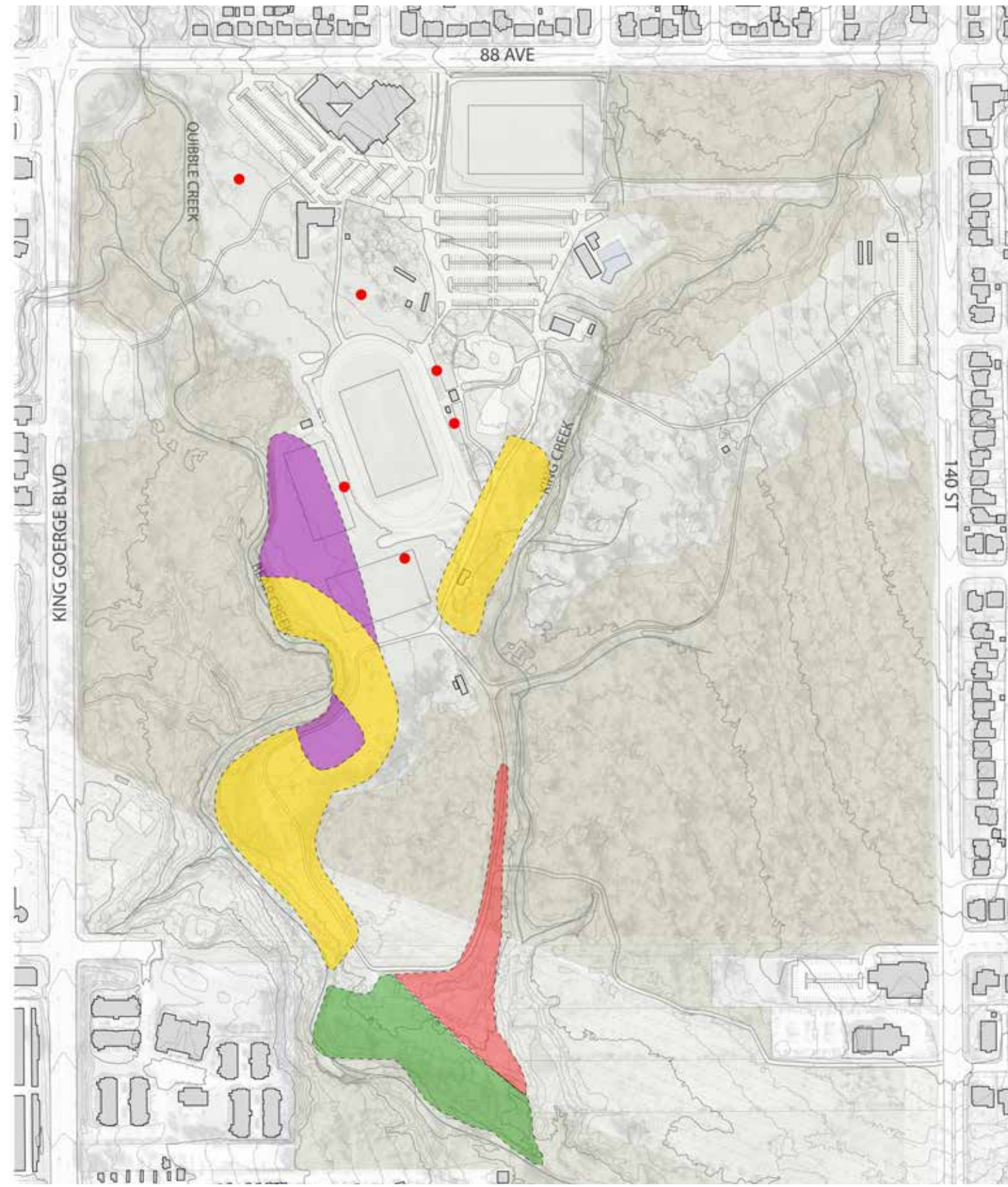
# BEAR CREEK ATHLETICS CENTRE SITE ANALYSIS

## RIPARIAN AREA & SETBACKS



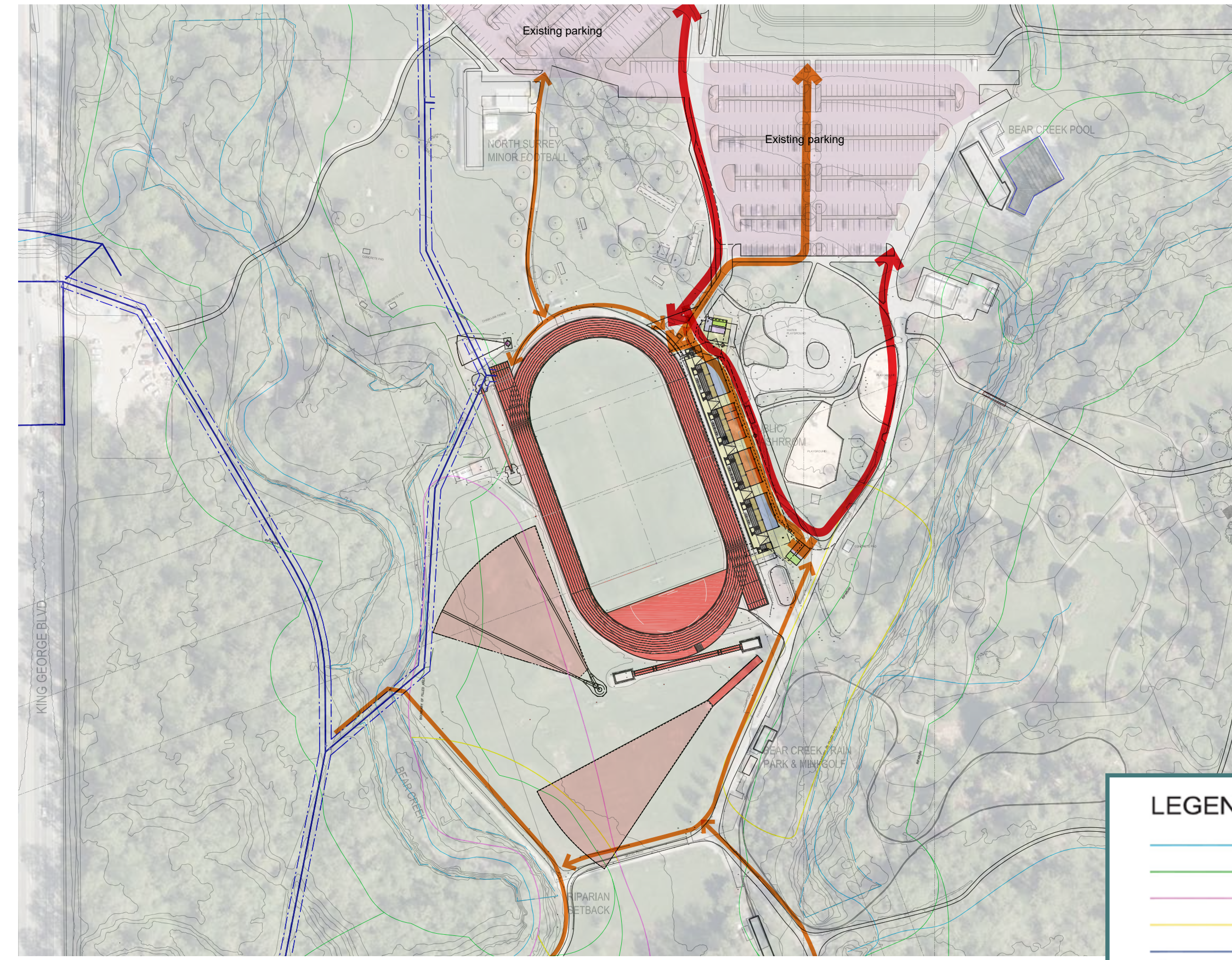
- LEGEND**
- Watercourses
  - Top of Bank
  - Cos Setback

## LANDFILL & SOIL CONDITIONS



- LEGEND**
- 1954-1961
  - 1961-1963
  - 1963-1966
  - 1966-1971
  - Geotechnical points

## PROPOSED CIRCULATION



- LEGEND**
- WATERCOURSE
  - RIPARIAN SETBACKS
  - GARBAGE FILL
  - SOIL FILL
  - SANITARY LINE WITH 3M BUFFER
  - SERVICE AND EMERGENCY ACCESS
  - PRIMARY PEDESTRIAN CIRCULATION
  - SECONDARY PEDESTRIAN CIRCULATION

# BEAR CREEK ATHLETICS CENTRE SITE PLAN



### LEGEND

- 1. Existing drop-off area and sidewalk
- 2. Shared pedestrian, service and emergency access
- 3. North plaza
- 4. Grandstand with washrooms and changerooms
- 5. Proposed Concession/Ticketing
- 6. Shared pedestrian, service and emergency access
- 7. South plaza
- 8. Existing fitness equipment area
- 9. Bear Creek train park & mini golf
- 10. Existing water play
- 11. Existing playground
- 12. Existing picnic shelter area
- 13. Running track
- 14. Football and soccer field with synthetic turf
- 15. High jump
- 16. Long jump
- 17. Javelin
- 18. Hammer + discus
- 19. Pole vault
- 20. Shot put
- 21. Existing pathways

The placement of the grandstand will keep its location at the existing bleachers to best service park users, protect riparian setbacks, and avoid disturbance to historic landfills areas. This will allow clear sightline to activities around the grandstand, for spectators to view track, field, and throw events, as well as provide washroom access to the public and users of the splash park and playground. Proposed ticketing and concession facility at either ends of the plaza will help liven the park during event and game days.

### CIRCULATION

The facility nestles itself amongst existing movement patterns. It includes a pedestrian promenade which also functions as a service and fire emergency vehicular path.

# BEAR CREEK ATHLETICS CENTRE GRAND- STAND DESIGN

The new Grandstand will be a well-integrated facility for athletes and park users. This new facility will include a partially covered grandstand seating for 2,200 spectators. The design features permeable access with multiple wide entrance ways to offer views onto the track and turf field and allow athletes to easily access the changerooms.

This facility will be inclusive of players and spectators of all abilities by implementing measures like ramps to access seating, and universal washroom. There will also be opportunities for public art, either as an integrated part of the architecture or landscape, or as a stand-alone piece.

Tell us about your ideas in the survey!



Find your survey here:  
[surrey.ca/parks](https://surrey.ca/parks)



# BEAR CREEK ATHLETICS CENTRE

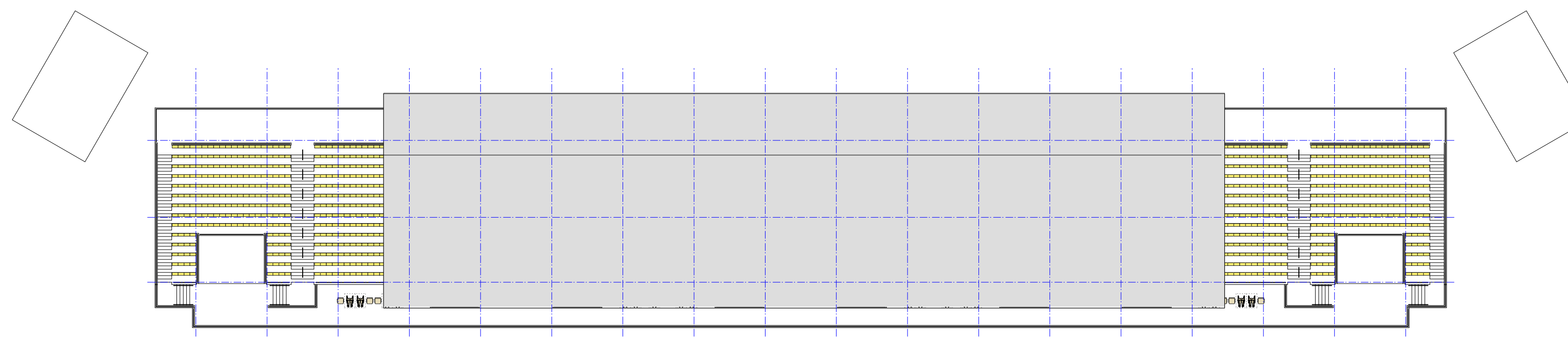
# GRANDSTAND FEATURES

## PROPOSED FEATURES

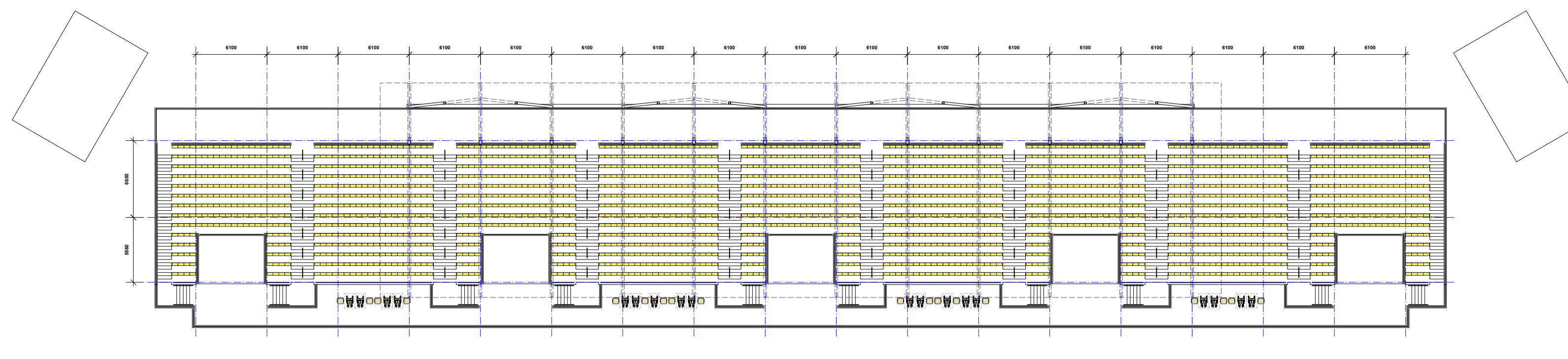
The grandstand canopy will cover two-third of its 2,200 spectator seats. Wide entrance ways connect between the plaza and the concourse with gentle ramps to facilitate universally accessible seats in the front, and tiered seating at the top.

Underneath the spectator seating, the new grandstand will include team changerooms, officials' rooms, equipment storage space, ticketing office, public washrooms, and concession facilities. Some of these amenities will also service the adjacent splash park and playground.

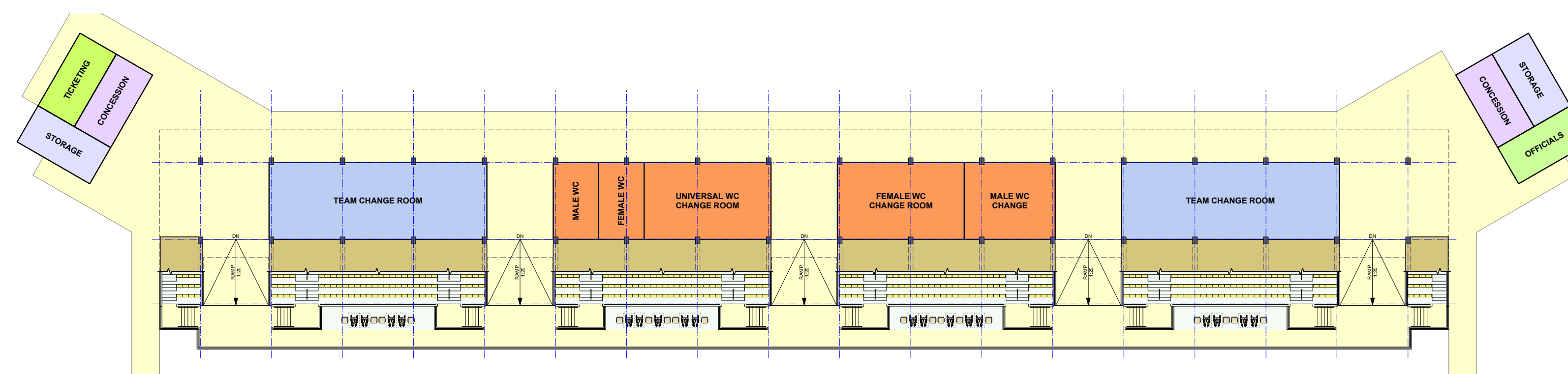
1 GRANDSTAND ROOF PLAN



2 GRANDSTAND SEATING PLAN



3 GRANDSTAND CONCOURSE PLAN



# BEAR CREEK ATHLETICS CENTRE SUSTAINABILITY FRAMEWORK

City of Surrey is committed to creating a thriving, green, inclusive city. The following sustainability framework guides this facility’s design aspirations. The following goals are informed by the City’s Climate Adaptation Strategy, Climate Action Plan, Corporate Energy and Emission Plan, Zero Waste Strategy, and Biodiversity and Conservation Strategy:

**Goal #1: Design for resilience to changing climate conditions**

The project will plan for resilience to higher peak temperatures and precipitation by planting drought tolerant species, increasing tree cover, exploring water reuse and fire suppression measures.

**Goal #2: Reduce energy consumption and carbon emissions**

The project will contribute to the City’s carbon reduction targets by using low embodied carbon material, energy efficient and renewable technologies to reduce energy consumption by building and lighting.

**Goal #3: Reduce potable water consumption**

The project will aim to reduce potable water use in washrooms and concession spaces using low-flow fixtures and explore potential to harvest rainwater for irrigation use.

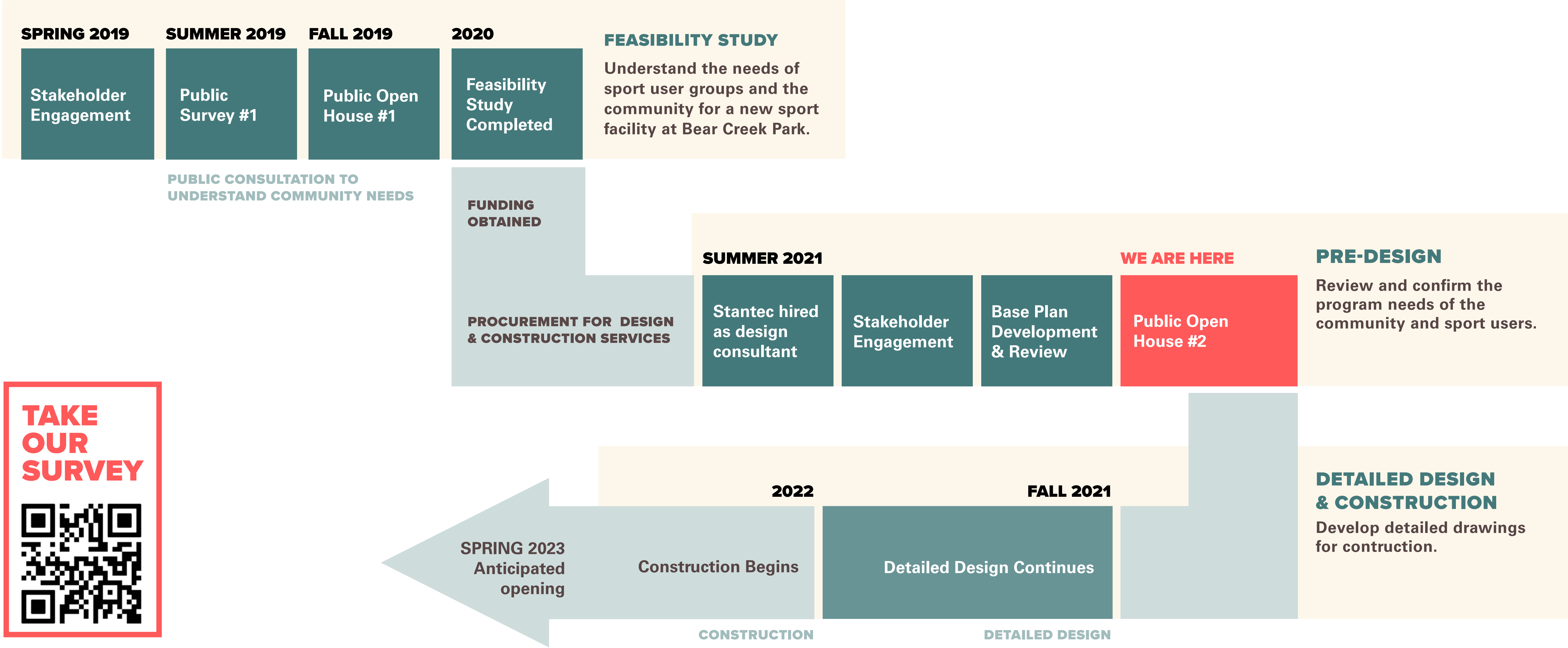
**Goal #4: Protect and enhance biodiversity**

The project will minimize its impact to the existing riparian system by respecting setbacks and exploring daylighting drainage channels to slow down runoff and creating habitat.

**Goal #5: Create no waste**

The project will consider reducing waste during demolition and construction, and in maintenance practices through design. It will consider futureproofing internal spaces for potential future reconfiguration.

# BEAR CREEK ATHLETICS CENTRE PROJECT ROADMAP



**TAKE OUR SURVEY**