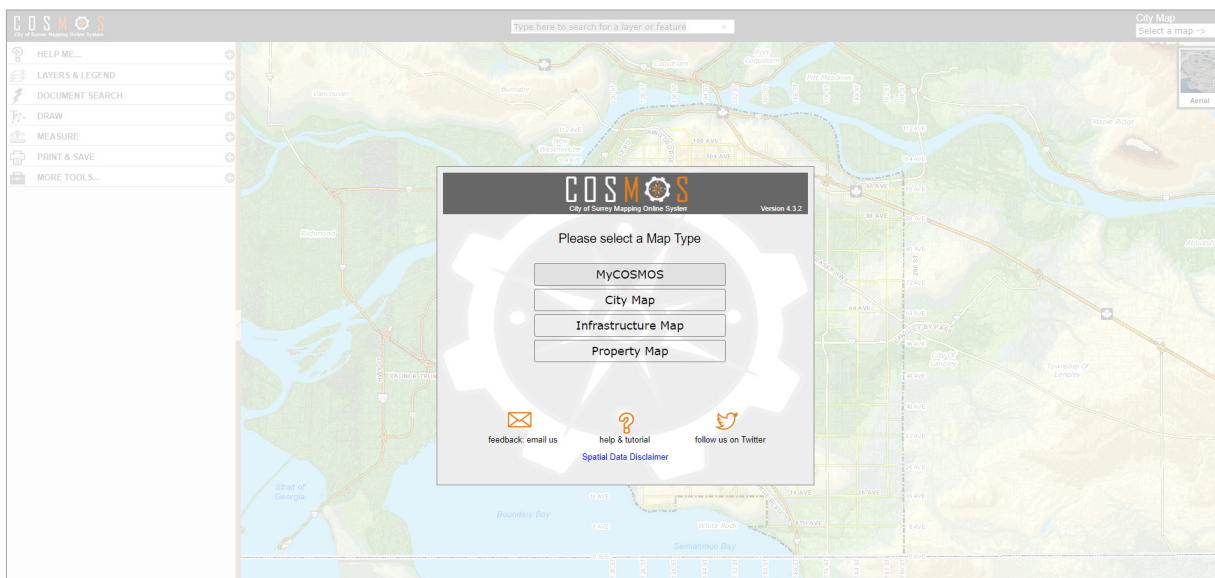


COSMOS TIPS

COSMOS is the City of Surrey's Mapping Online System. It's a great tool to locate parks close to you, look back at years and years of aerial maps and identify trees growing around your school.

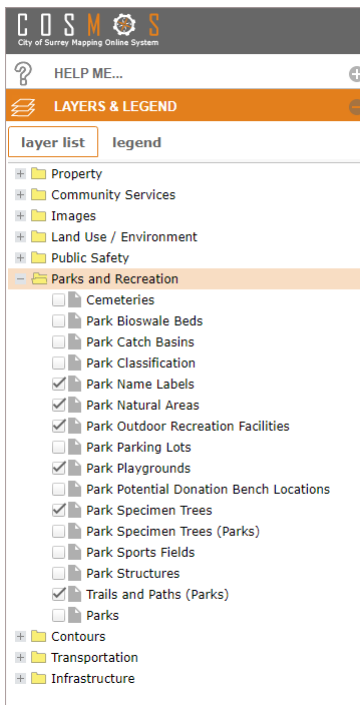
Visit surrey.ca/cosmos then scroll down and click "**Launch COSMOS**"

You will see:

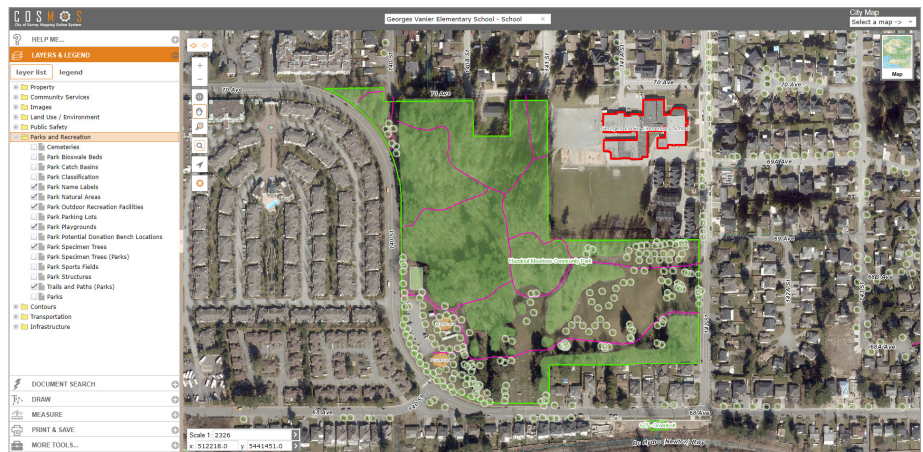


1. Select MyCOSMOS and type your school name into the search bar at the top.
2. Zoom in or out using the + and – to the left of the displayed map area. You can switch between an aerial and map view by clicking the small rectangle in the top right corner. If you hover over the rectangles, one will say "Click to change base map."
3. From the menu on the left, select **Layers & Legend > Parks and Recreation**

4. From here, you can view various park layers such as:
 - **Parks** – Find parks closest to your school or home.
 - **Park Name Labels** – Learn the names of the parks closest to your school.
 - **Park Natural Areas** – Shown as green polygons, natural areas (such as forests and wetlands) have no public access (other than on designated trails) and are protected for their ecological value. These are important areas for plants and wildlife.
 - **Trails and Paths** – Locate trails that are sanctioned and maintained by the City of Surrey. These are displayed as pink lines.
 - **Park Structures** – Locate picnic shelters, benches, water fountains, etc.
 - **Park Specimen Trees** – After selecting this layer, click on individual inventoried City trees to read more information about them such as their Latin species names and planting dates.
5. To find washrooms, type the name of the park into the search bar and look at the drop-down items. If there is a washroom building or portable, it should be listed here.
6. To view aerial maps of the city dating back to 1949, select **Layers & Legend > Images**. Once in the Images folder, there will be a drop-down menu of different aerial photos. You'll only be able to view one at a time so select the year you want to view and be sure to deselect other years.
7. The **Draw** and **Measure** features allow you to add your own polygons, symbols, text boxes and more.



Screenshot showing available park layers



Screenshot of COSMOS with the above layers selected for Hazelnut Meadows Community Park

Surrey Parks works together with the community to celebrate nature and protect the environment.

Visit us online to plan your park visits, connect with nearby nature and help your students become stewards of our urban forest.