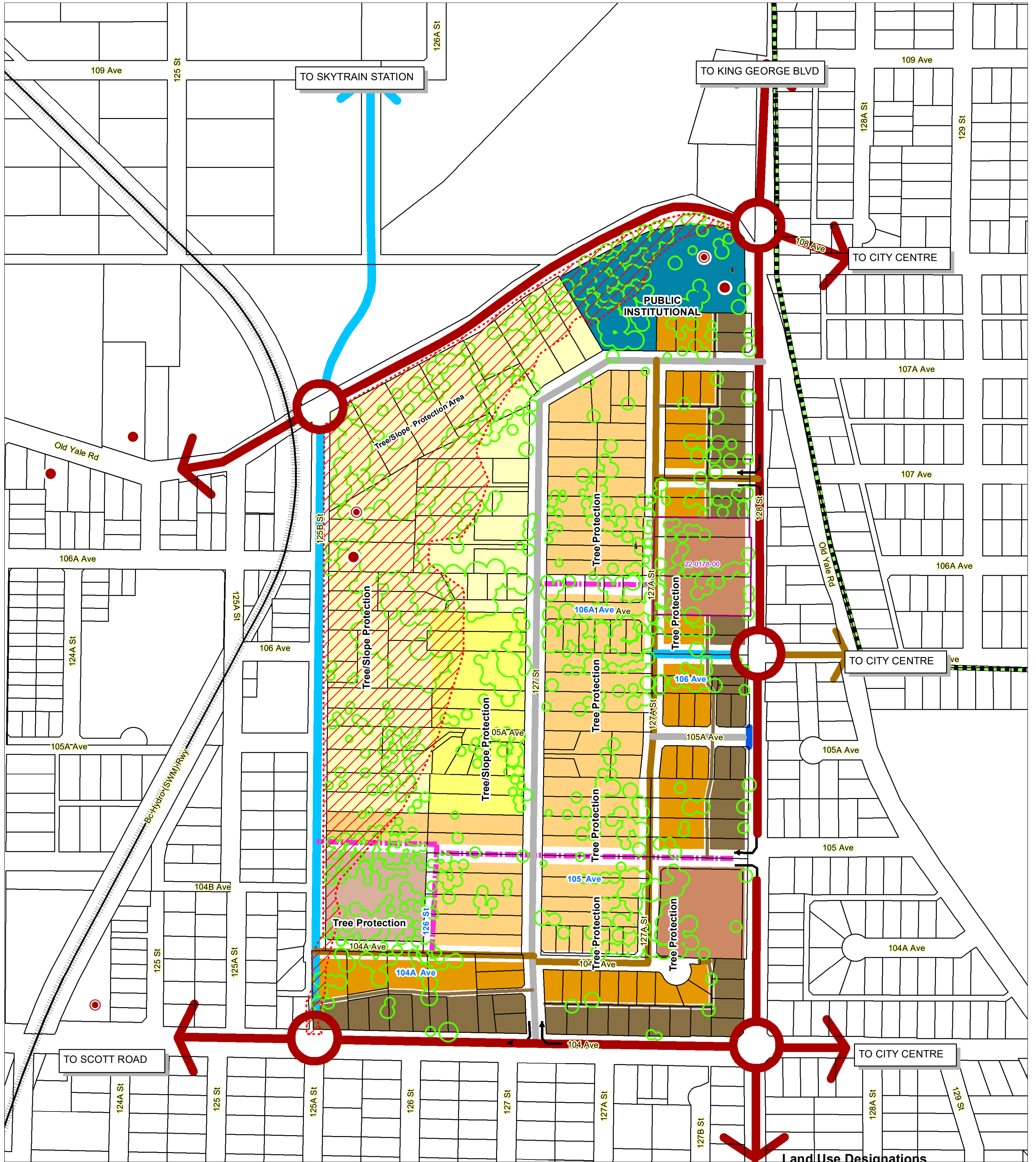


SOUTHWESTMINSTER HEIGHTS: INFILL AREA CONCEPT PLAN



PLANNING AND DEVELOPMENT DEPARTMENT

Legend

- Development Applications
 - Flex Road 18-20 m (Future)
 - Local Road 20m (Future)
 - Collector Road 24m
 - Existing Local Road 20m
 - Lane 6 m
 - Arterial Road 30m
 - Right In Right Out
 - Proposed
 - Right in Right Out
 - Full Movement Intersection Development Applications
 - Road Closed in Future
- ### Heritage Sites
- Development Applications
 - Heritage Tree
 - Registered
 - Registered and Protected

Land Use Designations

- Development Applications
- Hillside Estate Residential (4 UPA)
- Low Density (Cluster/Panhandle) (4-6 UPA)
- Low Density (Tree Protection) (6-10 UPA)
- Low-Medium Density (10-15 UPA)
- Low Density Townhouse (10-15 UPA Gross)
- Low Density Townhouse (15-20 UPA)
- Medium Density Residential Lane Served (15-23 UPA)
- Public Institutional
- Steep Slopes
- Trees

Approved by Council: 22 July 2013 Amended 13 March 2025